



Lesbourne Road, Reigate

Guide Price £375,000 - £400,000





Located in the heart of Reigate, this modern apartment offers convenience for every day life with both the town centre and Priory Park being a short walk away. Spacious rooms with high ceilings and big windows, let in lots of natural light and modern, neutral fittings throughout offer timeless styling.





Guide Price £375,000 - £400,000

This spacious, ground floor apartment is located just a short stroll from Reigate Priory Park and town centre. Originally built in the 1930's and later converted to apartments in 2017 by Frendcastle, a company that focuses on high quality, low volume homes.

The apartment itself is bright and airy, with two large windows to the living areas which let in lots of natural light. The living space is open plan but well laid out offering space for dining next to the kitchen and a defined living space. The kitchen is a modern two tone gloss finish with ample storage and work top space.

Both bedrooms are good size double rooms, and both have built in wardrobes. There is a family bathroom as well as an en suite shower room to the main bedroom, and being less than 10 years old, both are fitted to a high quality with recessed mirrors, vanity storage and neutral tiling.

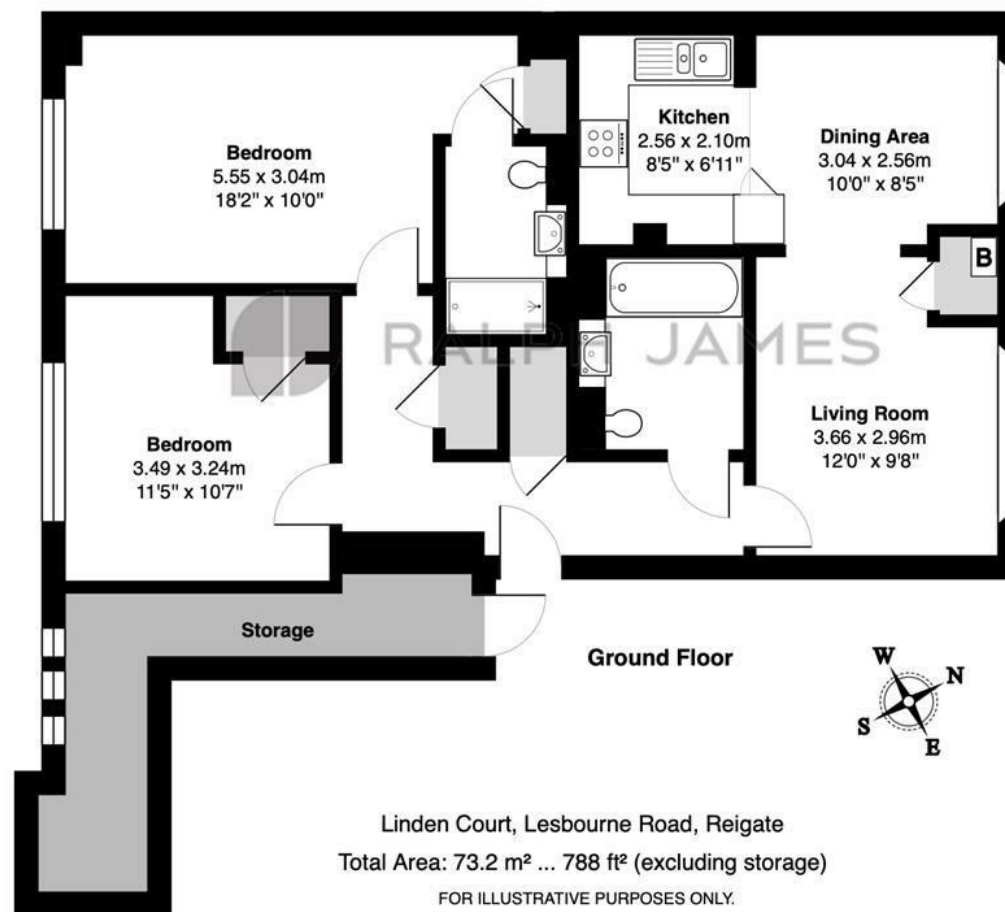
A unique feature of this property is the amount of added storage - something which is often an issue with apartments! As well as built in wardrobes and two cupboards in the hallway, this property has access to a locked storage area in the communal hallway, beneath the stairs. This is ideal for keeping suitcases, Christmas decorations, sports equipment, tools etc and great for helping to keep things in the apartment nest and tidy.

Outside there are communal gardens as well as an allocated, underground parking space.



Need to know

- Two double bedroom ground floor apartment
- Walking distance to Reigate Priory Park and Reigate town centre
- Located on the popular Lesbourne Road, with a selection of local shops
- Large, open plan living space with defined areas for dining and living
- Modern kitchen with two tone units and quartz worktops
- Family bathroom and en suite shower to main bedroom
- Built in wardrobes to both bedrooms
- Allocated, underground parking space
- Extra, lockable storage space in the communal hallway



Interested?

reigate@ralphjames.co.uk
01737 333677

ralphjames.co.uk

Whilst every attempt has been made to ensure the accuracy of the floor plan shown, all measurements, positioning, fixtures, features, fittings and any other data shown are an approximate interpretation for illustrative purposes only and are not to scale.

No responsibility is taken for any error, omission, miss-statement or use of data shown.

The above statement applies to both 'Still Moving London LTD' and the Company or individual displaying this floor plan.

Unauthorised reproduction prohibited.

Â© Still Moving London LTD (www.stillmoving.london)

